

PIK3CA antibody

Catalog No: #AB38118



Orders: [order@abscitech.com](mailto:order@abscitech.com)  
Support: [tech@abscitech.com](mailto:tech@abscitech.com)

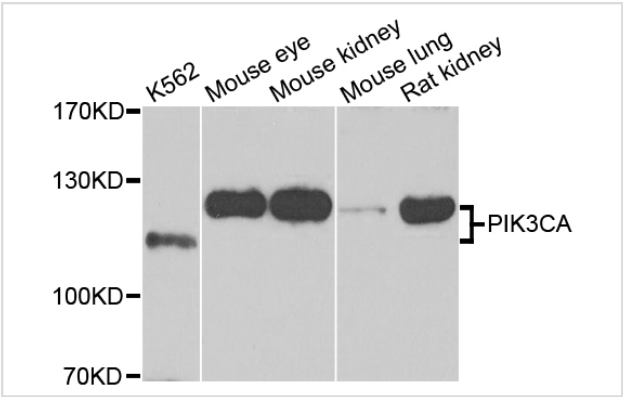
Description

Product Name	PIK3CA antibody
Host Species	Rabbit
Clonality	Polyclonal
Purification	Antibodies were purified by affinity purification using immunogen.
Applications	WB IHC
Species Reactivity	Hu Ms Rt
Specificity	The antibody detects endogenous level of total PIK3CA antibody.
Immunogen Type	Recombinant Protein
Immunogen Description	Recombinant protein of human PIK3CA.
Target Name	PIK3CA
Other Names	PIK3CA;MGC142161;MGC142163;PI3K;p110-alpha;
Accession No.	Swiss-Prot#: P42336NCBI Gene ID: 5290
SDS-PAGE MW	124kd
Concentration	1.0mg/ml
Formulation	Supplied at 1.0mg/mL in phosphate buffered saline (without Mg2+ and Ca2+), pH 7.4, 150mM NaCl, 0.02% sodium azide and 50% glycerol.
Storage	Store at -20°C

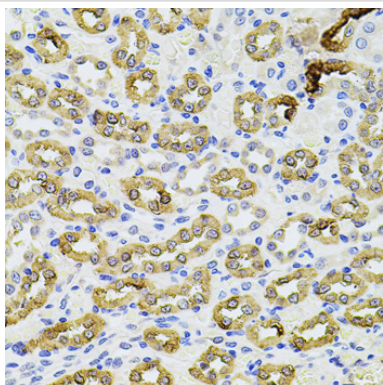
Application Details

Western blotting: □1:500 - 1:2000  
Immunohistochemistry: 1:50 - 1:100

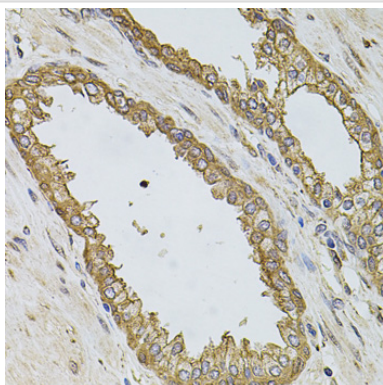
Images



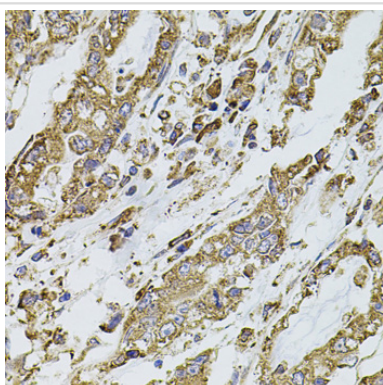
Western blot analysis of extracts of various cell lines, using PIK3CA antibody.



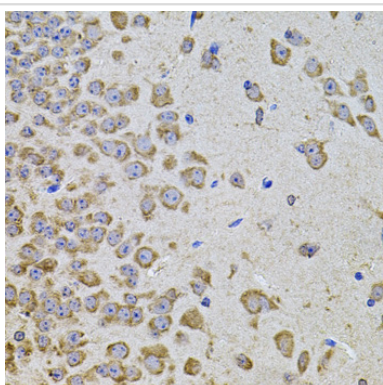
Immunohistochemistry of paraffin-embedded rat kidney tissue using PIK3CA antibody at dilution of 1:100 (x40 lens).



Immunohistochemistry of paraffin-embedded human prostate tissue using PIK3CA antibody at dilution of 1:100 (x40 lens).



Immunohistochemistry of paraffin-embedded human gastric cancer tissue using PIK3CA antibody at dilution of 1:100 (x40 lens).



Immunohistochemistry of paraffin-embedded mouse brain tissue using PIK3CA antibody at dilution of 1:100 (x40 lens).

## Background

PIK3CA belongs to the PI3/PI4-kinase family. It phosphorylates PtdIns, PtdIns4P and PtdIns(4,5)P2 with a preference for PtdIns(4,5)P2. Defects in PIK3CA are associated with colorectal cancer (CRC). Defects in PIK3CA are associated with breast cancer. Defects in PIK3CA are associated with ovarian cancer. Defects in PIK3CA may underlie hepatocellular carcinoma (HCC). Defects in PIK3CA are a cause of keratosis seborrheic (KERSEB). The antibody is specific to PIK3CA.

---

Note: This product is for in vitro research use only and is not intended for use in humans or animals.