

α-tubulin Mouse Monoclonal Antibody

Catalog No: #AB37981



Orders: order@abscitech.com
Support: tech@abscitech.com

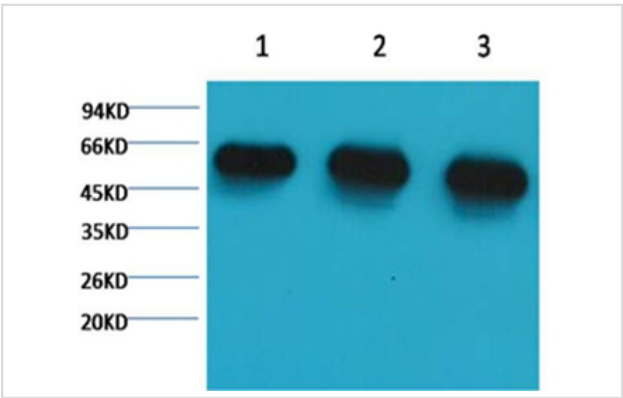
Description

Product Name	α-tubulin Mouse Monoclonal Antibody
Host Species	Mouse
Clonality	Monoclonal
Purification	Affinity purification using immunogen.
Applications	WB IF IP
Species Reactivity	Hu Rt Ms
Specificity	The α-tubulin antibody can detects endogenousα-tubulin protein.
Target Name	α-tubulin
Other Names	alpha-tubulin N-acetyltransferase; ATAT1; C6orf134; CF134;
Accession No.	Swiss-Prot#:Q71U36/P68363Gene ID: 7846/10376
SDS-PAGE MW	52kd
Concentration	1.0mg/ml
Formulation	Mouse IgG1 in phosphate buffered saline (without Mg2+ and Ca2+), pH 7.4, 150mM NaCl, 0.02% sodium azide and 50% glycerol.
Storage	Store at -20°C

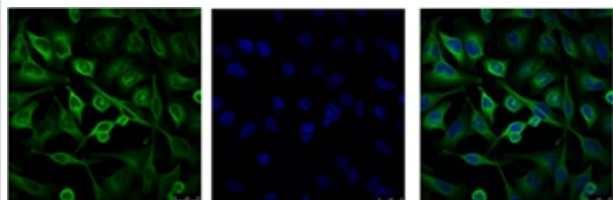
Application Details

Western blotting: 1:5000~1:10000
Immunofluorescence: 1:100~1:200
Immunoprecipitation: 1:200

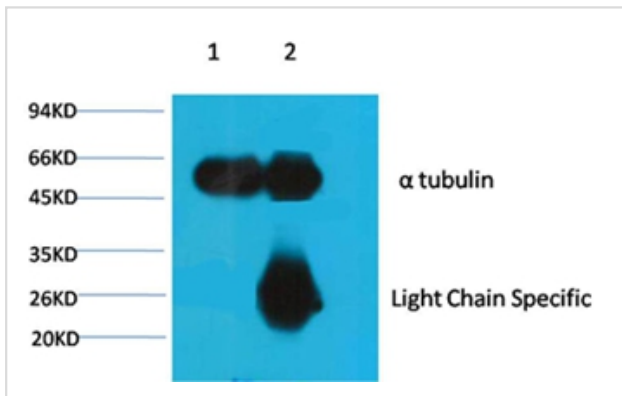
Images



Western blot analysis of 1) Hela, 2) Rat BrianTissue, 3) Mouse Brain Tissue, using #AB37981 diluted at 1:5,000.



IF analysis of HeLa with #AB37981 (Left) and DAPI (Right) diluted at 1:100.



1B'B'Input: Mouse Brain Tissue Lysate
2B'B'IP product: IP dilute 1:200
Western blot analysis: primary antibody : #AB37981 1:5,000
Secondary antibody: Goat anti-Mouse IgG, Light chain specific, 1:5,000

Background

Tubulin is one of several members of a small family of globular proteins. The tubulin superfamily includes five distinct families, the alpha-, beta-, gamma-, delta-, and epsilon-tubulins. The most common members of the tubulin family are α -tubulin and β -tubulin, the proteins that make up microtubules. Each has a molecular weight of approximately 55 KD. Microtubules are assembled from dimers of α - and β -tubulin

Note: This product is for in vitro research use only and is not intended for use in humans or animals.