

EBFP Rabbit Polyclonal Antibody

Catalog No: #AB38087

Orders: order@abscitech.comSupport: tech@abscitech.com

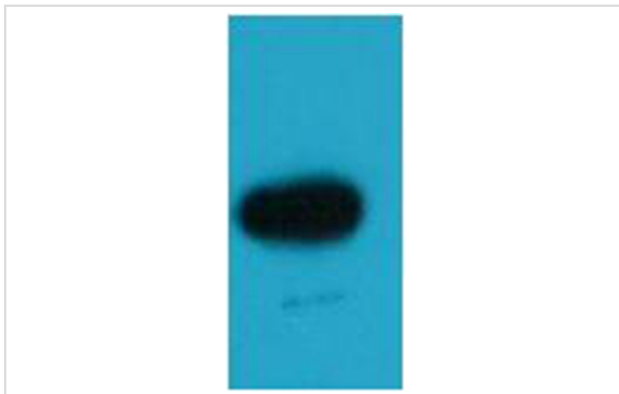
Description

Product Name	EBFP Rabbit Polyclonal Antibody
Host Species	Rabbit
Clonality	Polyclonal
Purification	Affinity purification using immunogen.
Applications	WB IHC IF IP
Species Reactivity	N/A
Specificity	The EBFP Mouse Polyclonal Antibody detects EBFP & EBFP Tag protein.
Target Name	EBFP
Other Names	BFP; EBFP; Blue Fluorescent Protein; Enhanced Blue Fluorescent Protein
Accession No.	Swiss-Prot#:Q9ULX5
Concentration	1.0mg/ml
Formulation	IgG in phosphate buffered saline (without Mg ²⁺ and Ca ²⁺), pH 7.4, 150mM NaCl, 0.02% sodium azide and 50% glycerol.
Storage	Store at -20°C

Application Details

Western blotting: 1:2000~1:5000

Images



Western blot analysis of EBFP recombinant protein, using #AB38087 diluted at 1:5,000.

Background

Enhanced Blue Fluorescent Protein (EBFP) emits a strong blue fluorescence. EBFP can be used as protein “tags” to study the sub-cellular localization of proteins and/or their translocation upon stimulation or as markers for transfection in transient and stable expression systems.

Note: This product is for in vitro research use only and is not intended for use in humans or animals.