

# mStrawberry Rabbit Polyclonal Antibody

Catalog No: #AB38083



Orders: [order@abscitech.com](mailto:order@abscitech.com)  
Support: [tech@abscitech.com](mailto:tech@abscitech.com)

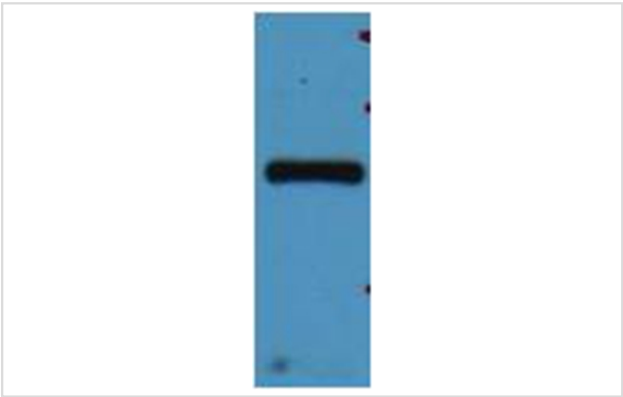
## Description

Product Name	mStrawberry Rabbit Polyclonal Antibody
Host Species	Rabbit
Clonality	Polyclonal
Purification	Affinity purification using immunogen.
Applications	WB IHC IF IP
Species Reactivity	N/A
Specificity	The mStrawberry Mouse Polyclonal Antibody detects mStrawberry & mStrawberry Tag protein.
Target Name	mStrawberry
Other Names	mStrawberry
Concentration	1.0mg/ml
Formulation	IgG in phosphate buffered saline (without Mg2+ and Ca2+), pH 7.4, 150mM NaCl, 0.02% sodium azide and 50% glycerol.
Storage	Store at -20°C

## Application Details

Western blotting: 1:2000~1:5000

## Images



Western blot analysis of mStrawberry recombinant protein, using #AB38083 diluted at 1:5,000.

## Background

mStrawberry is a bright, monomeric red fluorescent protein which was developed in Dr. Roger Tsien's lab by directed mutagenesis of mRFP.

Note: This product is for in vitro research use only and is not intended for use in humans or animals.