

## Histone H2B(Acetyl-Lys23) Rabbit Polyclonal Antibody

Catalog No: #ABHW089

Orders: [order@abscitech.com](mailto:order@abscitech.com)Support: [tech@abscitech.com](mailto:tech@abscitech.com)

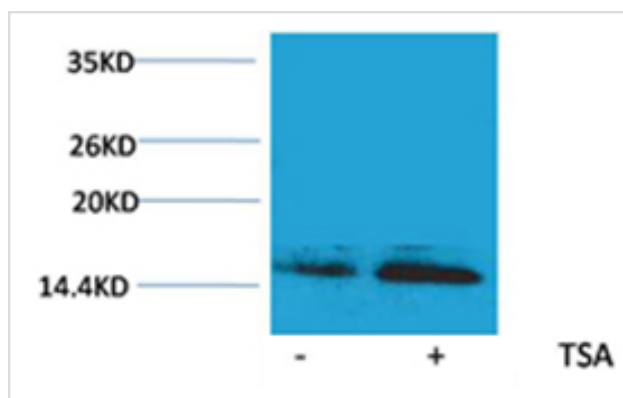
## Description

Product Name	Histone H2B(Acetyl-Lys23) Rabbit Polyclonal Antibody
Host Species	Rabbit
Clonality	Polyclonal
Purification	Affinity purification using immunogen.
Applications	WB
Species Reactivity	Hu Rt Ms
Specificity	The Histone H2B(Acetyl Lys23) Rabbit Polyclonal Antibody detects endogenous Histone H2B(Acetyl Lys23) protein.
Immunogen Type	peptide
Immunogen Description	A synthetic acetylated peptide corresponding to residues surrounding Lys23 of human histone H2B.
Target Name	Histone H2B(Acetyl-Lys23)
Modification	Acetyl-Lys23
Other Names	H2B GL105 antibody; H2B.1 antibody; Histone H2B type 1B antibody; HIST1H2BB antibody
Accession No.	Swiss-Prot#:P33778
SDS-PAGE MW	14kd
Concentration	1.0mg/ml
Formulation	Rabbit Antiserum, containing 0.02% sodium azide as Preservative and 50% Glycerol.
Storage	Store at -20°C

## Application Details

Western blotting: 1:500~1:1000

## Images



Western blot analysis of extracts from HeLa cells, untreated (-) or treated with TSA (1  $\mu$ M, 18 hr; +), using #ABHW089 diluted at 1:2,000.

## Background

Histone H2B is one of the 5 main histone proteins involved in the structure of chromatin in eukaryotic cells.

---

Note: This product is for in vitro research use only and is not intended for use in humans or animals.