

Myc-Tag Mouse Monoclonal Antibody

Catalog No: #ABT504



Package Size: #ABT504-1 50ul #ABT504-2 100ul

Orders: order@abscitech.comSupport: tech@abscitech.com

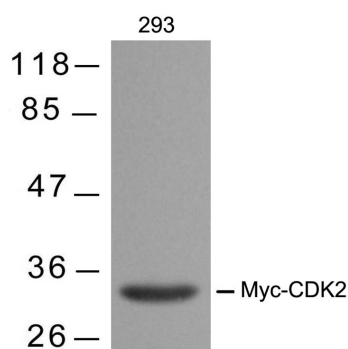
Description

Product Name	Myc-Tag Mouse Monoclonal Antibody
Host Species	Mouse
Clonality	Monoclonal
Clone No.	9E10
Isotype	IgG1
Purification	Antibodies were produced from mice ascites by injecting mice with a monoclonal cell line which was fused by mouse spleen and SP2/0 myeloma cell. Spleen cells were isolated from mice by immunizing with synthetic peptide and KLH conjugates.
Applications	WB
Specificity	The mouse mAb detects transfected proteins containing the Myc epitope tag. The antibody recognizes the Myc-tag fused to either the amino- or carboxy- terminus of targeted proteins in transfected cells.
Immunogen Type	Peptide
Immunogen Description	Peptide sequence around aa. 410-419 (EQKLISEEDL) derived from human c-Myc.
Target Name	Myc-Tag
Accession No.	NCBI Protein: NP_002458.2
Concentration	1.0mg/ml
Formulation	Supplied in mice ascites
Storage	Store at 4°C for short term use. Store at -20°C for long term preservation. Avoid freezing and thawing repeatedly.

Application Details

Western blotting: 1:5000~1:10000

Images



Western blot analysis of extracts from 293 cells transfected with Myc-CDK2 using Myc-Tag mouse mAb #ABT504.

Background

Epitope tags are artificial epitopes useful for the labeling and detection of proteins. Epitope tags - short amino acid sequences are 'fused' to the N- or

C-terminus of the protein.

Munro, S. and Pelham, H.R. (1984) EMBO J. 3, 3087-3093.

Note: This product is for in vitro research use only and is not intended for use in humans or animals.