

GAPDH mouse mAb

Catalog No: #AB21336



Package Size: #AB21336-1 50ul #AB21336-2 100ul

Orders: [order@abscitech.com](mailto:order@abscitech.com)  
Support: [tech@abscitech.com](mailto:tech@abscitech.com)

Description

Product Name	GAPDH mouse mAb
Host Species	Mouse
Clonality	Monoclonal
Purification	Affinity-chromatography
Applications	WB IHC IF E
Species Reactivity	Hu Rt Ms Mk D ChHm Rb
Specificity	GAPDH Mouse Monoclonal antibody detects endogenous levels of total GAPDH protein.
Immunogen Type	Recombinant Protein
Immunogen Description	Full-length GAPDH protein of human
Target Name	GAPDH
Other Names	G3PD, GAPD
Accession No.	P04406
SDS-PAGE MW	34KD
Concentration	1.0mg/ml
Formulation	Mouse IgG1 in phosphate buffered saline (without Mg2+ and Ca2+), pH 7.4, 150mM NaCl, 0.02% sodium azide and 50% glycerol.Store at -20 °C.Stable for 12 months from date of receipt
Storage	Store at -20°C/1 year

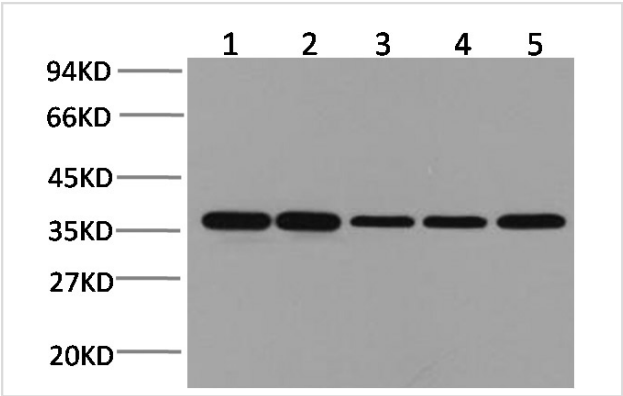
Application Details

WB: 1:3000~1:10000

IHC: 1:200

IF/ICC: 1:200

Images



Western blot analysis of Hela (1), Rat brain (2), Rabbit Muscle(3), Sheep Muscle(4), and Mouse brain (5) with GAPDH mouse mAb.

## Background

---

Glyceraldehyde 3 phosphate dehydrogenase (GAPDH) is well known as one of the key enzymes involved in glycolysis. GAPDH is constitutively abundant expressed in almost cell types at high levels, therefore antibodies against GAPDH are useful as loading controls for Western Blotting. Some pathology factors, such as hypoxia and diabetes, increased or decreased GAPDH expression in certain cell types.

---

Note: This product is for in vitro research use only and is not intended for use in humans or animals.