

ERLIN1/2 Polyclonal Antibody

Catalog No: #AB46738



Package Size: #AB46738-1 50ul #AB46738-2 100ul

Orders: order@abscitech.com
Support: tech@abscitech.com

Description

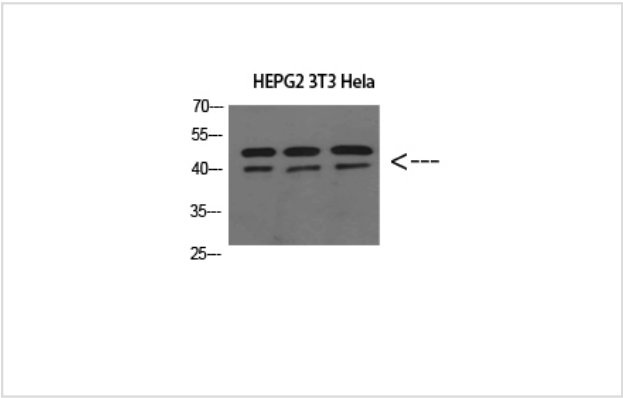
Product Name	ERLIN1/2 Polyclonal Antibody
Host Species	Rabbit
Clonality	Polyclonal
Purification	The antibody was affinity-purified from rabbit antiserum by affinity-chromatography using epitope-specific immunogen.
Applications	WB IHC
Species Reactivity	Hu Ms Rt
Specificity	ERLIN1/2 Polyclonal Antibody detects endogenous levels of ERLIN1/2
Immunogen Type	protein
Immunogen Description	Synthesized peptide derived from ERLIN1/2 at AA range: 31-80
Target Name	ERLIN1/2
Accession No.	Swiss-Prot:O75477/O94905NCBI Gene ID:
Calculated MW	82kd
Concentration	1 mg/ml
Formulation	Liquid in PBS containing 50% glycerol, 0.5% BSA and 0.02% sodium azide.
Storage	Store at -20°C

Application Details

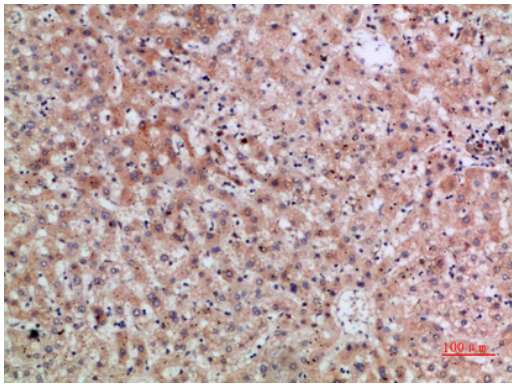
Western blotting: 1:500-1:2000

Immunohistochemistry: IHC: 1:100-1:300

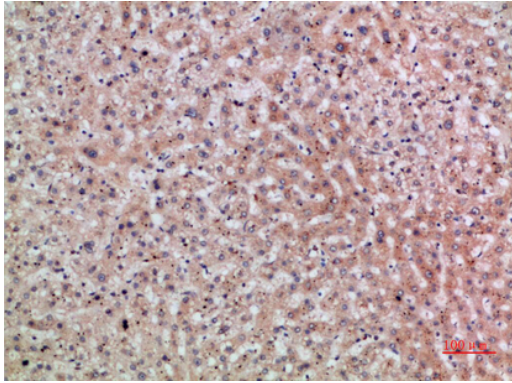
Images



Western Blot analysis of HEPG2 3T3 Hela cells using ERLIN1/2 Polyclonal Antibody diluted at 1:800. Secondary antibody was diluted at 1:20000



Immunohistochemical analysis of paraffin-embedded human-liver, antibody was diluted at 1:200



Immunohistochemical analysis of paraffin-embedded human-liver, antibody was diluted at 1:200

Note: This product is for in vitro research use only and is not intended for use in humans or animals.