

## CD238 Polyclonal Antibody

Catalog No: #AB46731



Package Size: #AB46731-1 50ul #AB46731-2 100ul

Orders: [order@abscitech.com](mailto:order@abscitech.com)Support: [tech@abscitech.com](mailto:tech@abscitech.com)

## Description

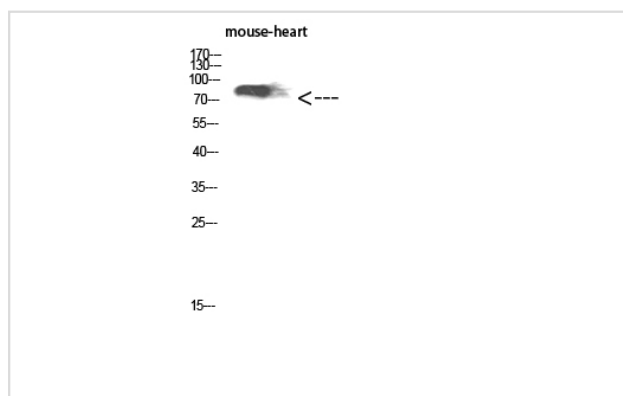
Product Name	CD238 Polyclonal Antibody
Host Species	Rabbit
Clonality	Polyclonal
Purification	The antibody was affinity-purified from rabbit antiserum by affinity-chromatography using epitope-specific immunogen.
Applications	WB IHC
Species Reactivity	Hu
Specificity	CD238 Polyclonal Antibody detects endogenous levels of CD238
Immunogen Type	protein
Immunogen Description	Synthesized peptide derived from CD238 at AA range: 351-400
Target Name	CD238
Other Names	Kell blood group, metallo-endopeptidase
Accession No.	Swiss-Prot:P23276NCBI Gene ID:3792
Calculated MW	82kd
Concentration	1 mg/ml
Formulation	Liquid in PBS containing 50% glycerol, 0.5% BSA and 0.02% sodium azide.
Storage	Store at -20°C

## Application Details

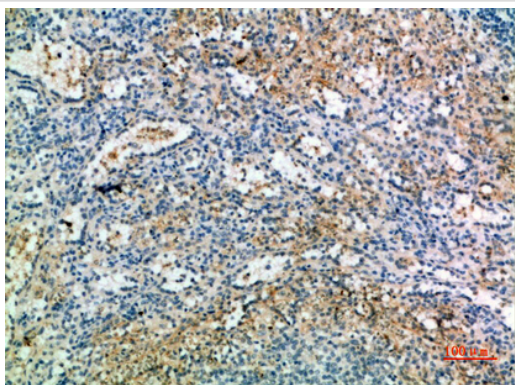
Western blotting: 1:500-1:2000

Immunohistochemistry: IHC: 1:100-1:300

## Images



Western Blot analysis of mouse-heart cells using CD238 Polyclonal Antibody diluted at 1:1000. Secondary antibody was diluted at 1:20000



Immunohistochemical analysis of paraffin-embedded human-spleen, antibody was diluted at 1:200

---

Note: This product is for in vitro research use only and is not intended for use in humans or animals.