

## Villin Polyclonal Antibody

Catalog No: #AB46730



Package Size: #AB46730-1 50ul #AB46730-2 100ul

Orders: [order@abscitech.com](mailto:order@abscitech.com)Support: [tech@abscitech.com](mailto:tech@abscitech.com)

## Description

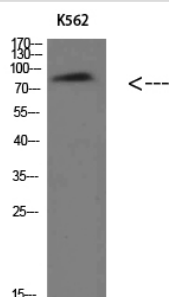
Product Name	Villin Polyclonal Antibody
Host Species	Rabbit
Clonality	Polyclonal
Purification	The antibody was affinity-purified from rabbit antiserum by affinity-chromatography using epitope-specific immunogen.
Applications	WB IHC
Species Reactivity	Hu Ms Rt
Specificity	Villin Polyclonal Antibody detects endogenous levels of Villin
Immunogen Type	protein
Immunogen Description	Synthesized peptide derived from Villin at AA range: 601-650
Target Name	Villin
Other Names	villin 1
Accession No.	Swiss-Prot:P09327NCBI Gene ID:7429
Calculated MW	90kd
Concentration	1 mg/ml
Formulation	Liquid in PBS containing 50% glycerol, 0.5% BSA and 0.02% sodium azide.
Storage	Store at -20°C

## Application Details

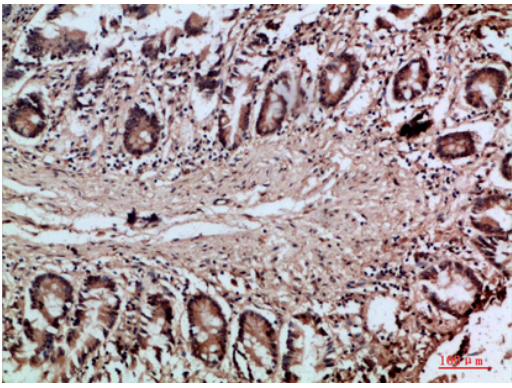
Western blotting: 1:500-1:2000

Immunohistochemistry: IHC: 1:100-1:300

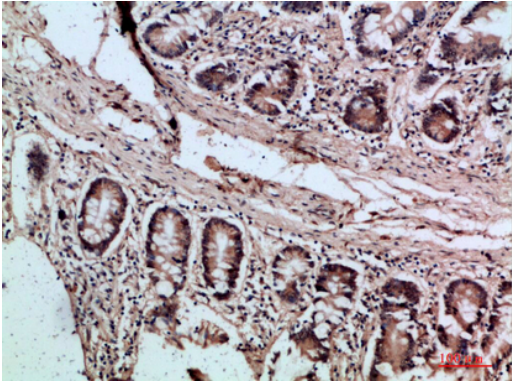
## Images



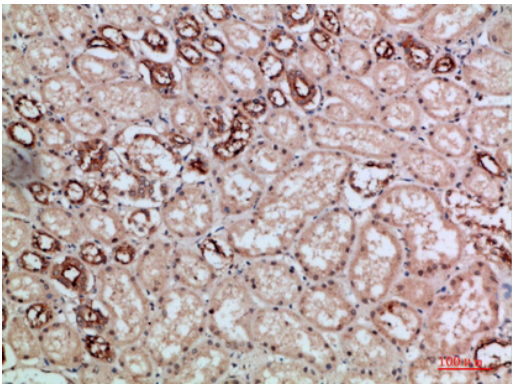
Western Blot analysis of K562 cells using Villin Polyclonal Antibody diluted at 1:500. Secondary antibody was diluted at 1:20000



Immunohistochemical analysis of paraffin-embedded human-colon, antibody was diluted at 1:200



Immunohistochemical analysis of paraffin-embedded human-colon, antibody was diluted at 1:200



Immunohistochemical analysis of paraffin-embedded human-kidney, antibody was diluted at 1:200

Note: This product is for in vitro research use only and is not intended for use in humans or animals.