

β-tubulin Mouse Monoclonal Antibody(Zebrafish Specific)

Catalog No: #AB38058



Orders: order@abscitech.com
Support: tech@abscitech.com

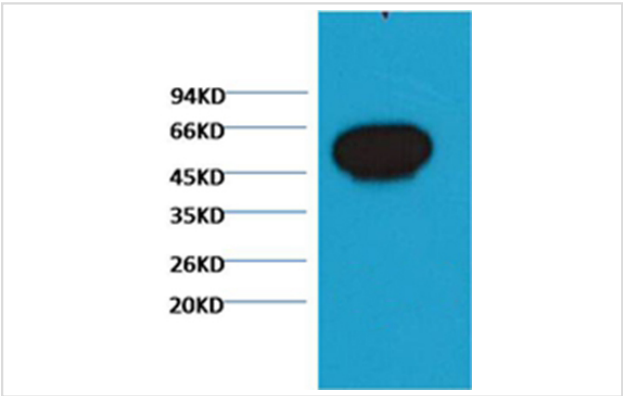
Description

| | |
|--------------------|---|
| Product Name | β-tubulin Mouse Monoclonal Antibody(Zebrafish Specific) |
| Host Species | Mouse |
| Clonality | Monoclonal |
| Purification | Affinity purification using immunogen. |
| Applications | WB IHC IF |
| Species Reactivity | Zebrafish |
| Specificity | Theβ-tubulin antibody can detects Zebrafish endogenousβ-tubulin protein. |
| Target Name | β-tubulin |
| Other Names | beta 5-tubulin; beta 1b tubulin; beta-4 tubulin; M40; MGC117247; MGC16435; OK/SW-cl.56; TBB5; TUBB; TUBB1; TUBB5 |
| Accession No. | Swiss-Prot#:P07437 |
| SDS-PAGE MW | 55kd |
| Concentration | 1.0mg/ml |
| Formulation | Mouse IgG1 in phosphate buffered saline (without Mg2+ and Ca2+), pH 7.4, 150mM NaCl, 0.02% sodium azide and 50% glycerol. |
| Storage | Store at -20°C |

Application Details

Western blotting: 1:5000~1:20000

Images



Western blot analysis of Zebrafish skeletal muscle, using #AB38058 diluted at 1:5,000.

Background

Microtubules are constituent parts of the mitotic apparatus, cilia, flagella, and elements of the cytoskeleton. They consist principally of 2 soluble proteins, alpha- and beta-tubulin, each of about 55,000 Da. Antibodies against beta Tubulin are useful as loading controls for Western Blotting. However it should be noted that levels of β-Tubulin may not be stable in certain cells. For example, expression of β-Tubulin in adipose tissue is very

low and therefore β -Tubulin should not be used as loading control for these tissues.

Note: This product is for in vitro research use only and is not intended for use in humans or animals.