

Histone H4(Di-Methyl-Lys20) Rabbit Polyclonal Antibody

Catalog No: #ABHW055

Orders: order@abscitech.comSupport: tech@abscitech.com

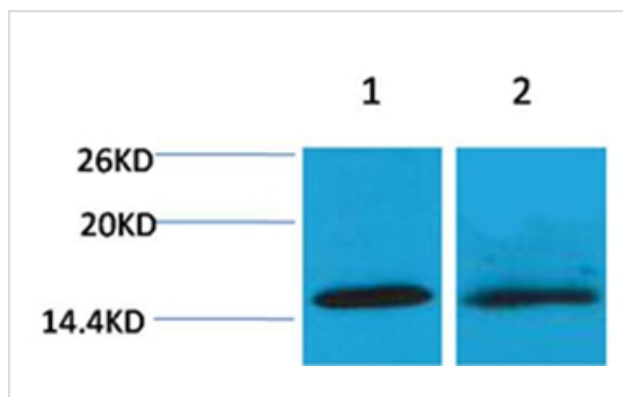
Description

Product Name	Histone H4(Di-Methyl-Lys20) Rabbit Polyclonal Antibody
Host Species	Rabbit
Clonality	Polyclonal
Purification	Affinity purification using immunogen.
Applications	WB
Species Reactivity	Hu Rt Ms
Specificity	The Histone H4(Di-methyl-Lys20) Rabbit Polyclonal Antibody detects endogenous Histone H4 (Di-methyl-Lys20) protein.
Immunogen Type	peptide
Immunogen Description	A synthetic Di-methylated peptide corresponding to residues surrounding Lys36 of human histone H4.
Target Name	Histone H4(Di-Methyl-Lys20)
Modification	Di-Methyl-Lys20
Other Names	Histone 1 H4 antibody; HIST1H4K antibody; MGC24116 antibody; dJ160A22.1 antibody
Accession No.	Swiss-Prot#:P62805
SDS-PAGE MW	14kd
Concentration	1.0mg/ml
Formulation	Rabbit Antiserum, containing 0.02% sodium azide as Preservative and 50% Glycerol.
Storage	Store at -20°C

Application Details

Western blotting: 1:500~1:1000

Images



Western blot analysis of 1) HeLa, 2) 3T3, using #ABHW055 diluted at 1:2,000.

Background

Histone H4 is one of the 5 main histone proteins involved in the structure of chromatin in eukaryotic cells. H4 is a structural component of the

nucleosome, and is subject to covalent modification, including acetylation and methylation, which may alter expression of genes located on DNA associated with its parent histone octamer.

Note: This product is for in vitro research use only and is not intended for use in humans or animals.